

# 1-6

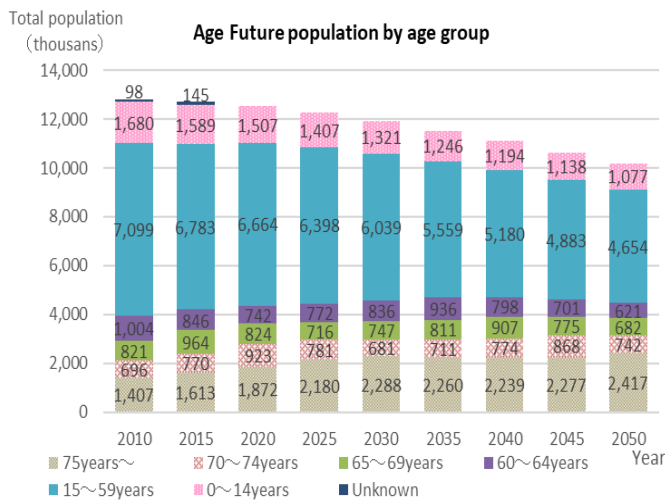
## Easy-to-use Transportation for Everyone

Specified Nonprofit Corporation  
Healthy town development  
**Atsushi Matsubara**

Six years have passed since the Government of Japan ratified the Convention on the Rights of Persons with Disabilities in 2014. The Olympic and Paralympic Games were about to be held, but there remain problems because Japanese Government has not admitted "the right to transport". Elderly people and people with disabilities, who are vulnerable, are refraining from going out due to fear of COVID-19 infection. There is a problem that the measures to encourage going out that have been tackled so far are not useful. Not going out is associated with deterioration in physical strength. Even when traveling by private car, which can be expected to prevent infection, driving errors due to deterioration in cognitive function of elderly drivers is becoming a social problem.

**Figure 1 Future Population by Age Group**

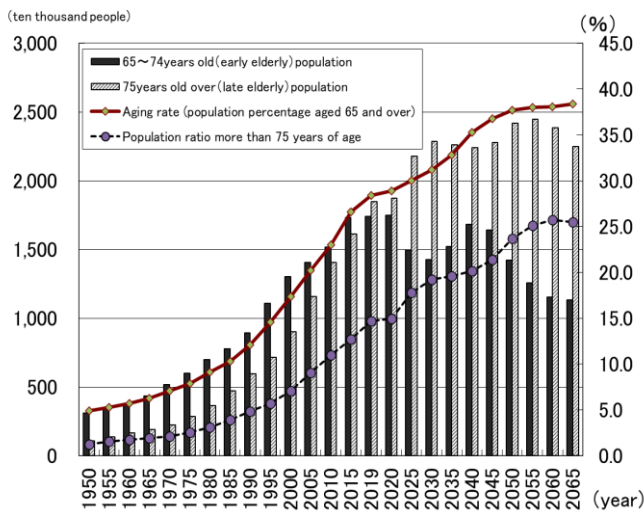
Japan's total population and productive population are steadily decreasing.



Source: [Statistics Bureau of Japan : 2020](#)

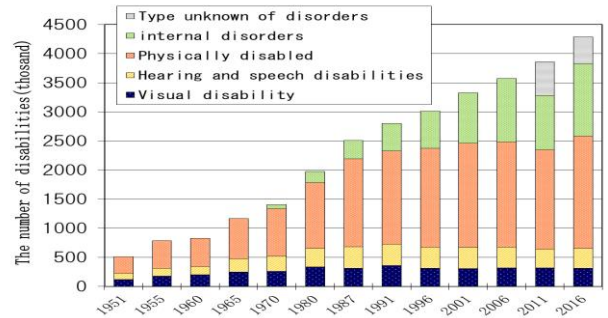
**Figure 2 Changes in the Elderly Population over Time**

Aging rate (over 65 years old) is 28.4%. The proportion of people aged 75 and over is 14.7%. From 2018, the number of late-stage elderly exceeded the number of early-stage elderly. Super-aging is progressing.



Source: [2020 version of "aging society White Paper"](#)

**Figure 3 The Number of the Persons with Disabilities**



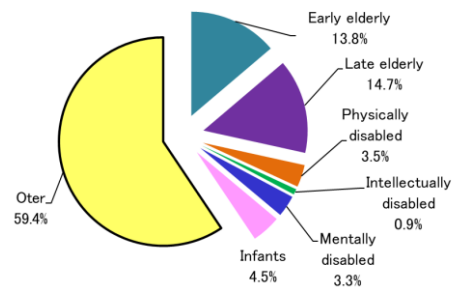
Source: MHLW "in 2016: Survey on the difficulty of life (nationwide home handicapped Survey)"

**Table 1 The Number of Persons with Disabilities at Home**

Fault type	Total number
Physically disabled	4.36 million people
Intellectually disabled	1.09 million people
Mentally disabled	4.19 million people

Source: [Annual Report on Government Measures for Persons with Disabilities 2019](#)

**Figure 4 Breakdown of Japan's Total Population (126 Million People)**



Source: [Annual Report on the Aging Society: 2020](#), [Annual Report on Government Measures for Persons with Disabilities 2019](#)

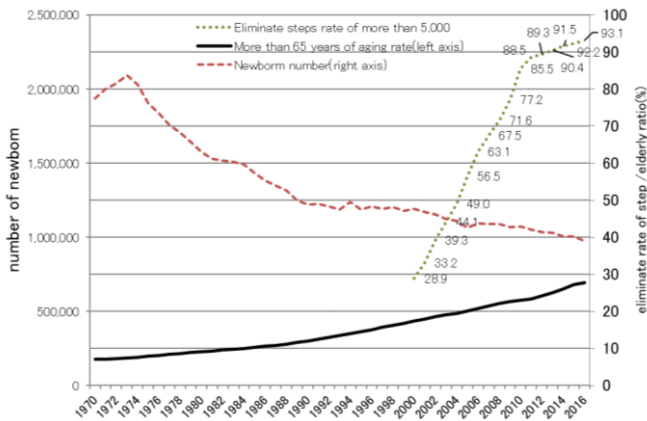
**Table 2 The Compliance of Standards Stipulated in the Transportation Barrier-Free Law**

	2020 year-end target	2018 year-end	Year-on-year
Railway vehicle	70%	73.2%	2.0p+
Low-floor bus	70%	58.8%	2.8p+
Welfare taxi	28,000 vehicles	28,602 vehicles	8,489 vehicles+
Passenger ship	50%	46.2%	2.4p+
Aircraft	90%	98.2%	0.4p+

Source: Compiled from MLIT documents

**Figure 5 Rate of Elimination of Grade Disparities in Railway Stations**

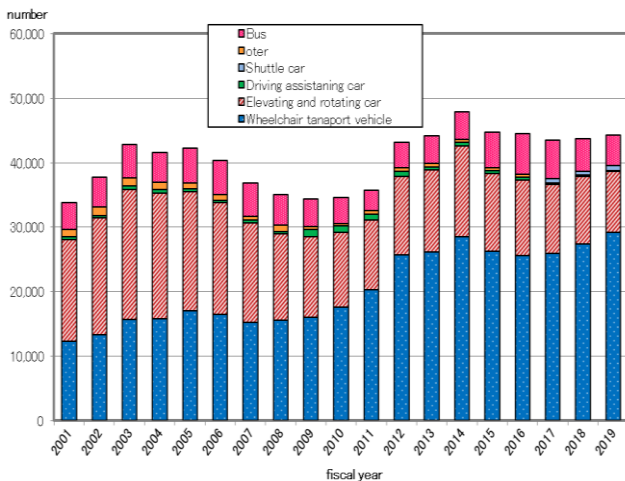
- As the population ages, stations are becoming barrier-free. The number of newborns using strollers is decreasing.



Source: Compiled from MLIT, MHLW of documents

**Figure 6 Trends in the Sales of Welfare Vehicles**

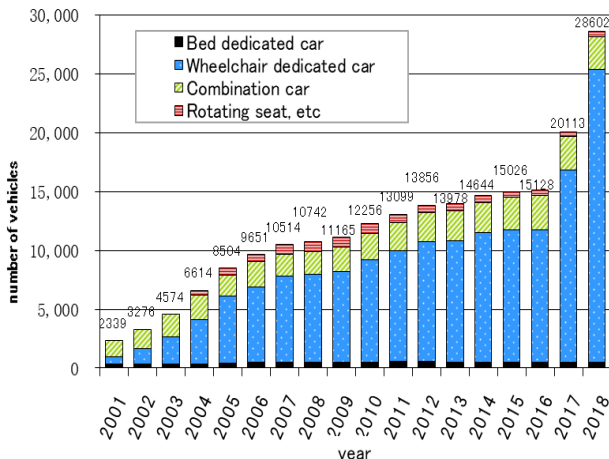
- Sales of welfare vehicles are picking up.



Source: Compiled from JAMA documents

**Figure 7 The Number of the Welfare Tax**

- With the introduction of wheelchair-friendly vehicles, welfare tax number is increasing rapidly.



Source : Compiled from MLIT document

**Table 3 The Number of Driver License Holders by Gender and Age Group**

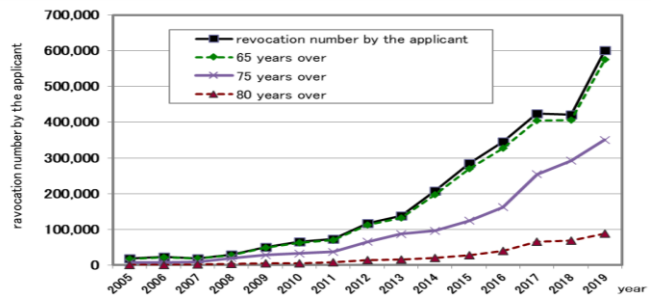
- Decrease in driver's license possession among young people.

age	2017 year-end		2018 year-end		2019 year-end		2018-2019 increase or decrease ratio	
	men	women	men	women	men	women	men	women
16~19	547,135	378,755	520,310	363,264	508,314	356,736	-2.3	-1.8
20~24	2,565,106	2,174,669	2,567,301	2,174,090	2,531,713	2,140,939	-1.4	-1.5
25~29	2,935,654	2,590,231	2,874,219	2,536,875	2,867,111	2,530,227	-0.2	-0.3
30~34	3,445,970	3,112,442	3,353,104	3,019,729	3,239,191	2,908,120	-3.4	-3.7
35~39	3,858,449	3,543,644	3,766,712	3,457,413	3,695,692	3,389,708	-1.9	-2.0
40~44	4,607,085	4,520,685	4,433,462	4,090,554	4,256,783	3,927,731	-4.0	-4.0
45~49	4,656,760	4,294,527	4,755,227	4,392,762	4,818,948	4,454,490	1.3	1.4
50~54	3,974,943	3,640,619	4,086,014	3,756,213	4,177,627	3,850,087	2.2	2.5
55~59	3,622,611	3,251,334	3,650,321	3,298,832	3,711,229	3,373,090	1.7	2.3
60~64	3,566,117	3,054,565	3,519,656	3,064,001	3,490,170	3,078,885	-0.8	0.5
65~69	4,299,868	3,367,040	4,066,902	3,271,012	3,793,321	3,105,198	-6.7	-5.1
70~74	3,124,570	1,997,104	3,368,967	2,289,675	3,598,414	2,528,031	6.8	10.4
75~79	2,177,322	1,006,977	2,262,875	1,110,327	2,329,766	1,211,247	3.0	9.1
80~84	1,240,107	380,742	1,242,698	407,636	1,232,337	430,319	-0.8	5.6
85~	512,074	78,090	526,934	87,839	528,080	94,924	0.2	8.1
total	45,133,771	37,391,424	44,994,702	37,320,222	44,778,696	37,379,732	-0.5	0.2

Source: National Police Agency "driver's license statistics 2019 version"

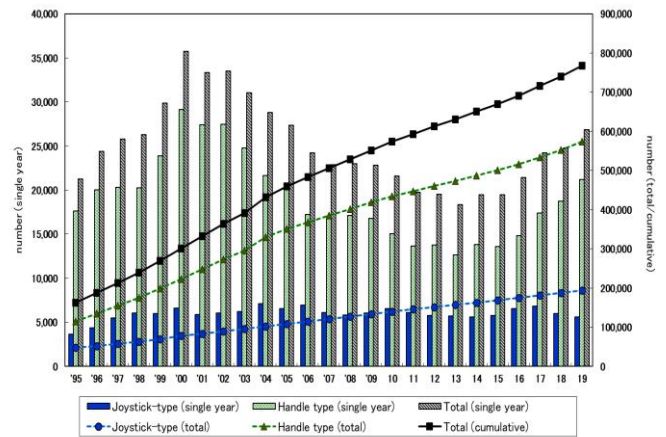
**Figure 8 The Number of Persons Who Voluntarily Return Their Driver's Licenses**

- By conducting a driver's license aptitude test, the number of people returning licenses is increasing rapidly.



Source: National Police Agency "driver's license statistics 2019 version"

**Figure 9 Electric Wheelchair Shipments**



Source: Electric wheelchair safety Promotion Association material

**Figure 10 The Advent of Wheelchair-accessible Taxi**

- Before the Olympic and Paralympic Games, wheelchair-accessible taxis were introduced by Japan Taxi in 2017. And to improve the time to get on and get off the wheelchair, the special temporary slope was added in 2019.

